

THE FUTURE OF REGIONAL JOBS

Hayley Achurch, Senior Researcher, Regional Australia Institute



**REGIONAL
AUSTRALIA
INSTITUTE**



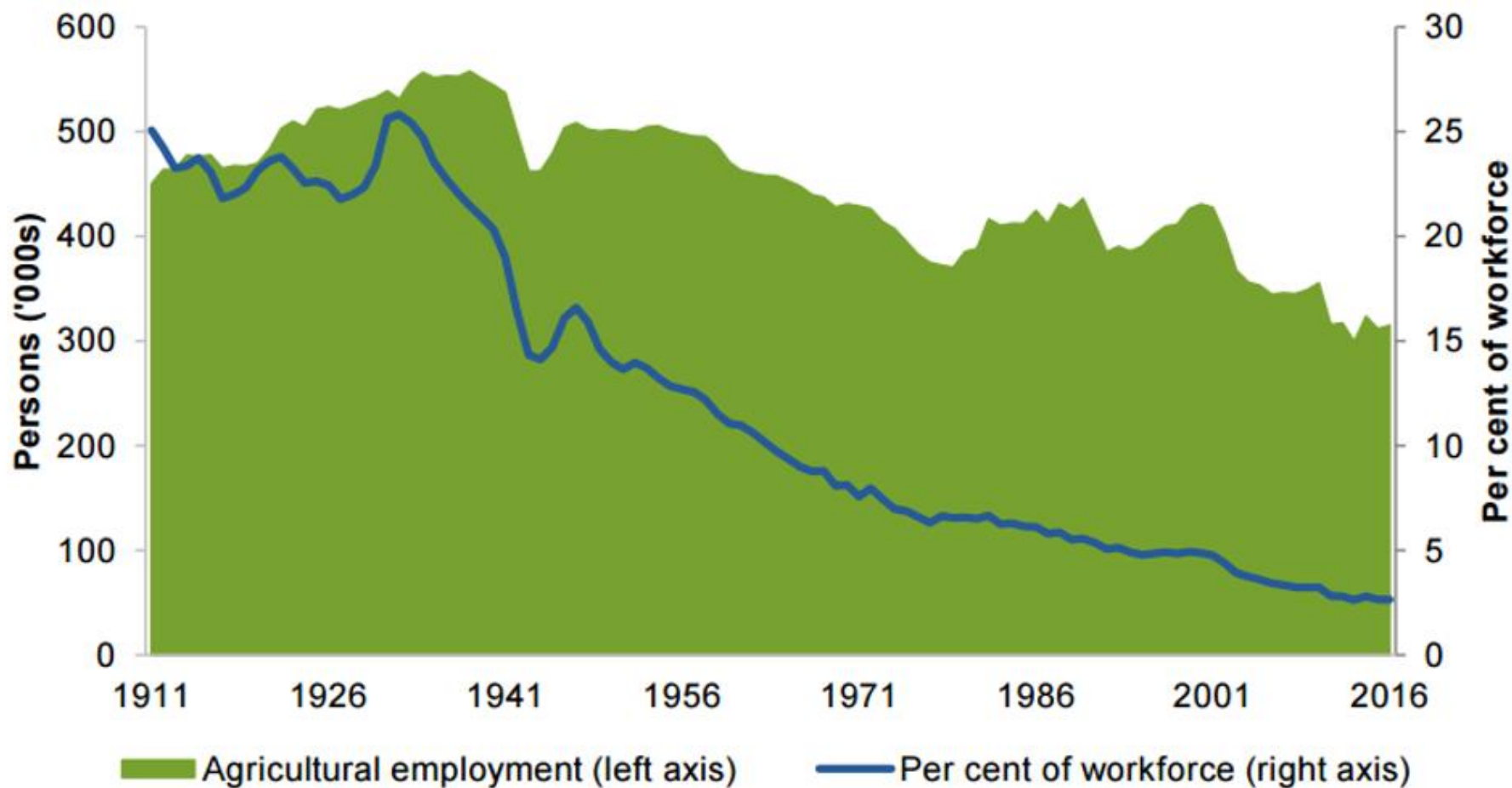
OVERVIEW

Regional jobs are changing

1. Automation
2. Growth Industries – agribusiness and tourism
3. International Migration



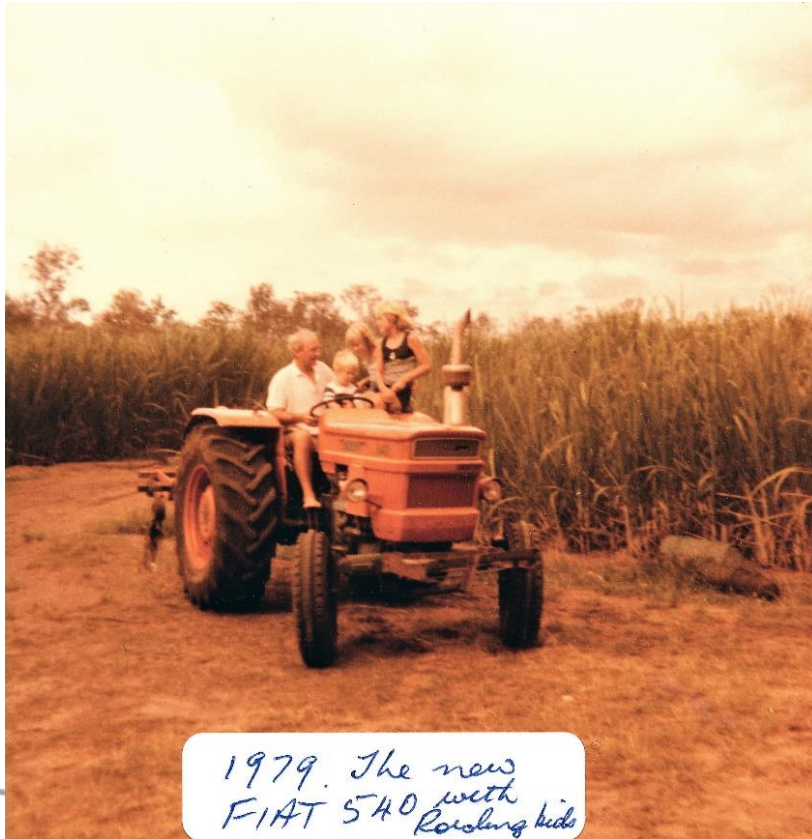
LONG TERM HISTORY OF EMPLOYMENT DECLINE IN AGRICULTURE



Productivity Commission (2017) Transitioning Regional Economies: Initial Report (April 2017), Canberra: Commonwealth of Australia.



TECHNOLOGICAL CHANGE AND EFFICIENCIES



Up to 22%

**jobs at risk of automation by
2030**

Jobs most at
risk?

**low skill, labour intensive,
routine**

Jobs least at
risk?

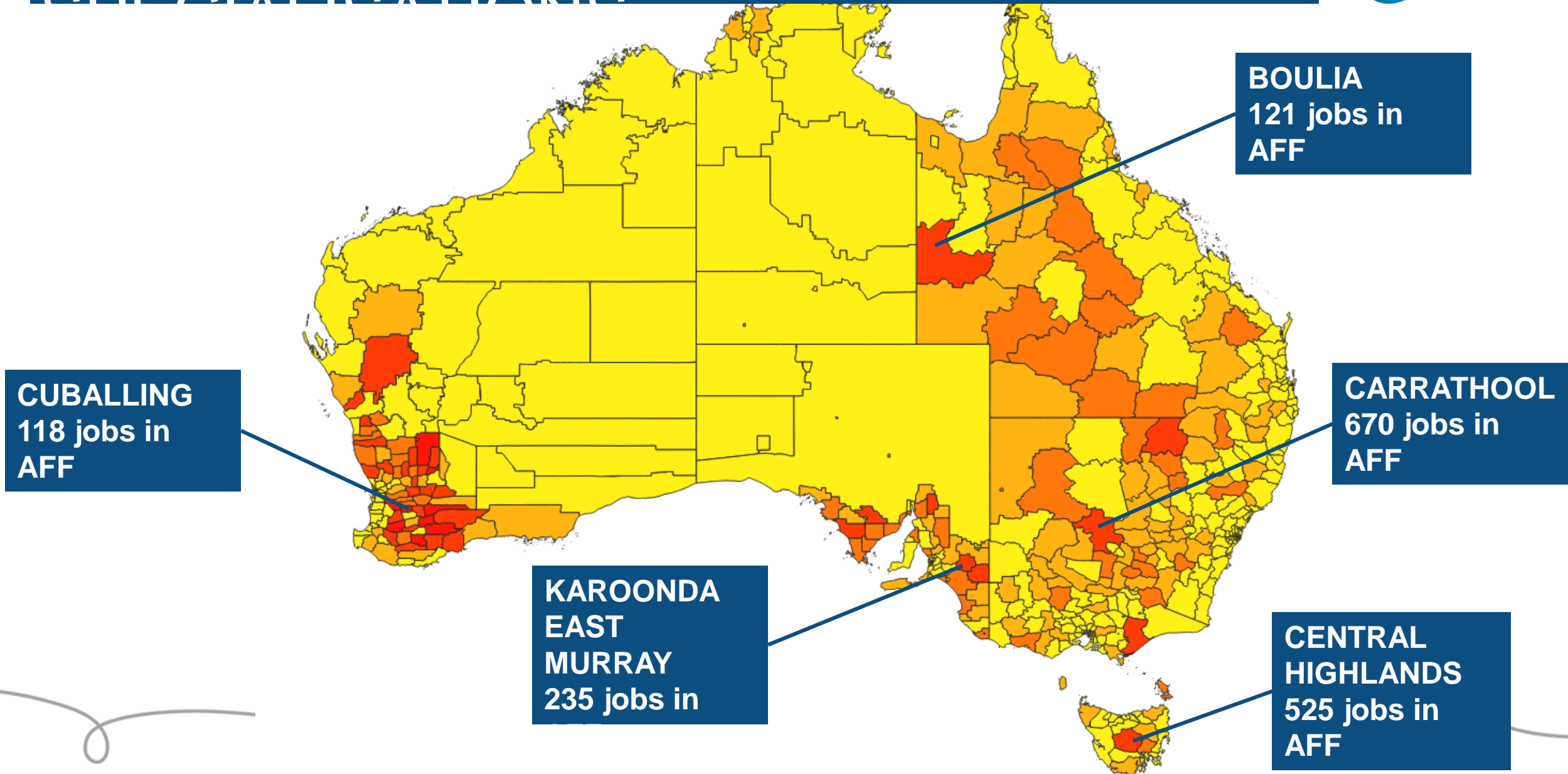
high skill, high care, non-routine



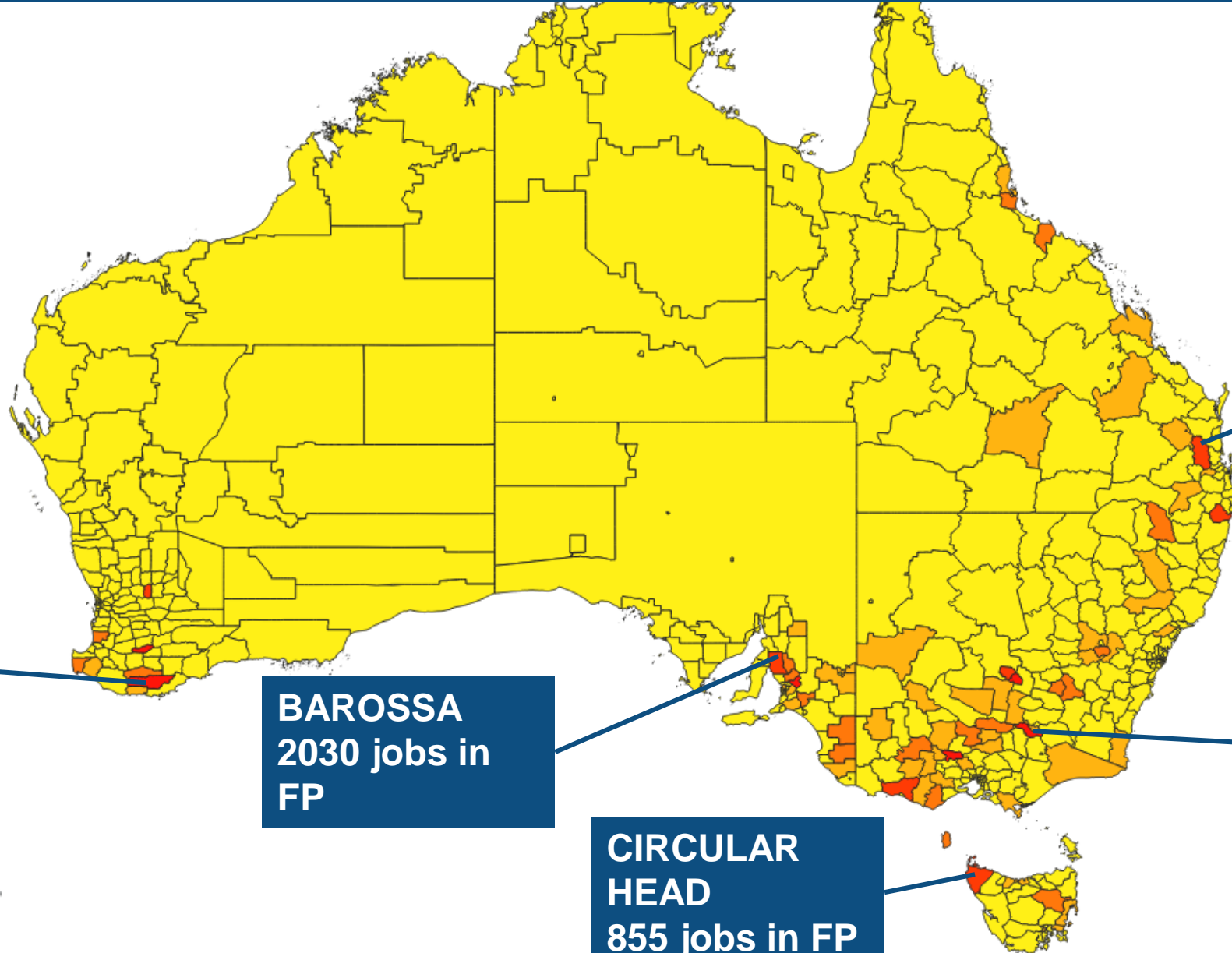
AUSTRALIA'S ECONOMIC GROWTH WAVES 2012-2022



AGRICULTURE/FORESTRY/FISHERIES SPECIALIZATIONS



FOOD PROCESSING SPECIALISATIONS



**PLANTAGENE
T**
404 jobs in FP

BAROSSA
2030 jobs in
FP

**CIRCULAR
HEAD**
855 jobs in FP

SOMERSET
787 jobs in FP
15% of all jobs

INDIGO
510 jobs in FP
20% of all jobs



TOURISM SPECIALISATIONS

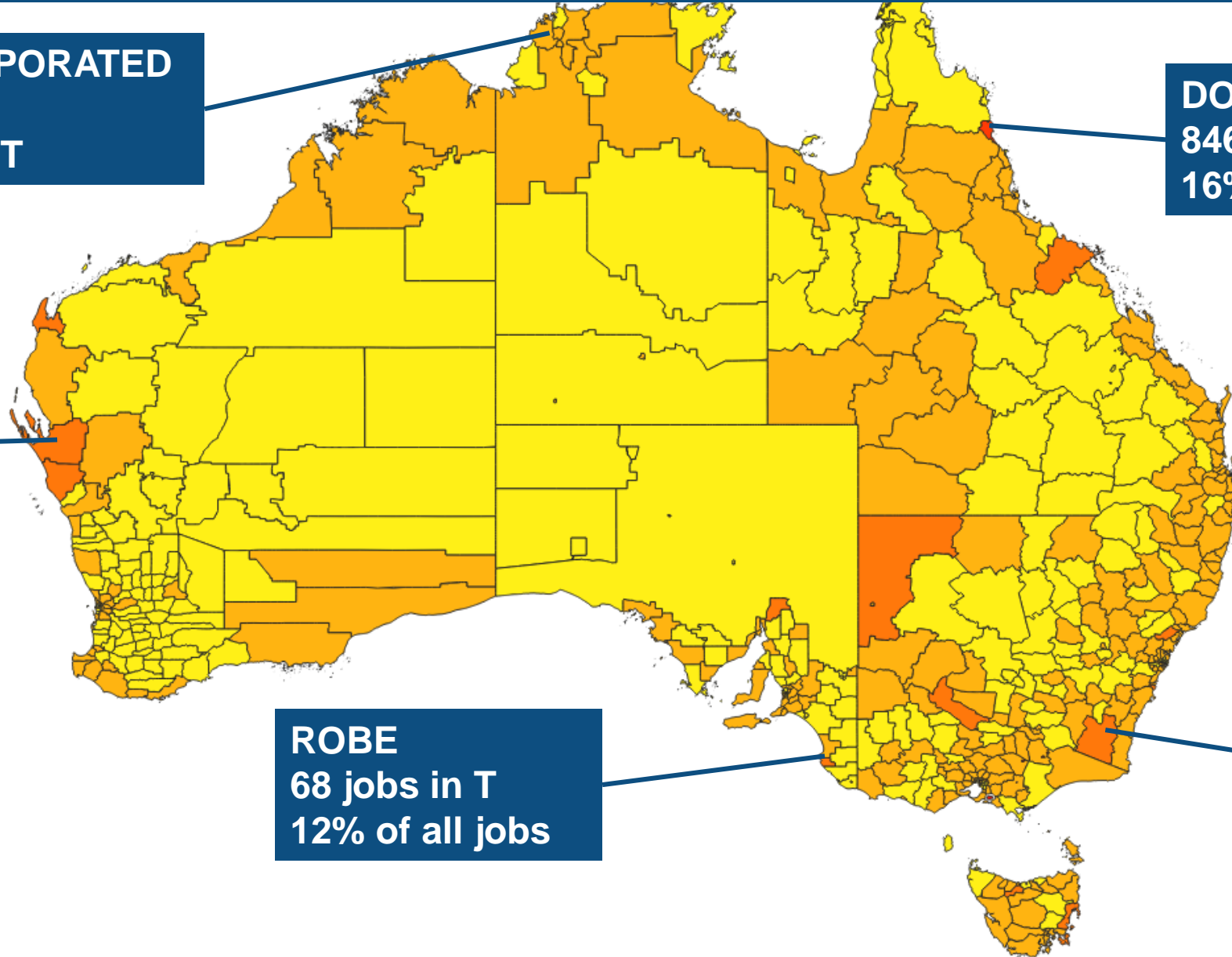
UNINCORPORATED
NT
51 jobs in T

DOUGLAS
846 jobs in T
16% of all jobs

SHARK BAY
50 jobs in T
12% of all jobs

ROBE
68 jobs in T
12% of all jobs

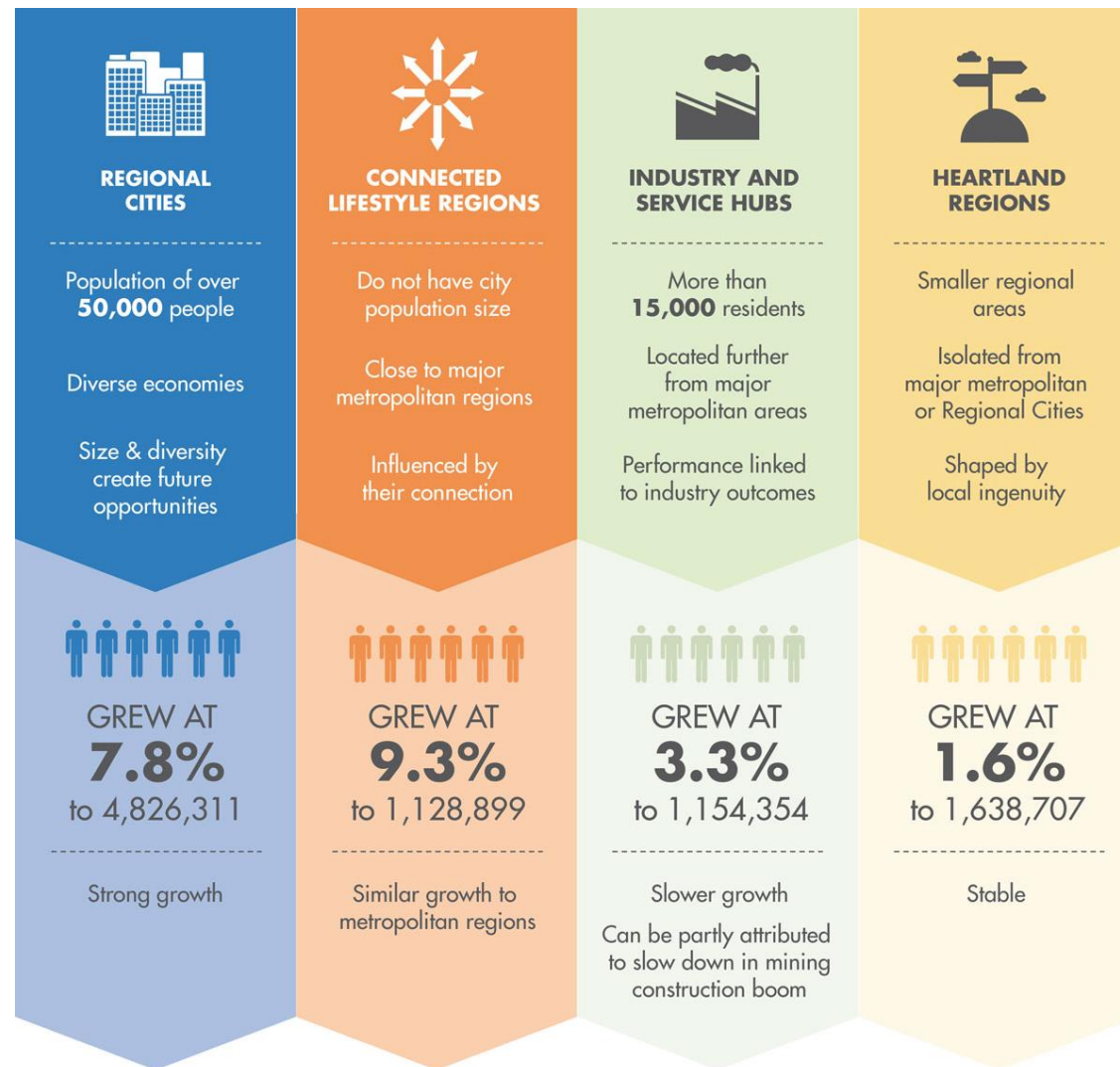
SNOWY
MONARO
1174 jobs in T
12% of all jobs



REGIONAL POPULATION GROWTH

It is a myth that
populations are
declining in
regional
Australia

Across the
board regions
have grown



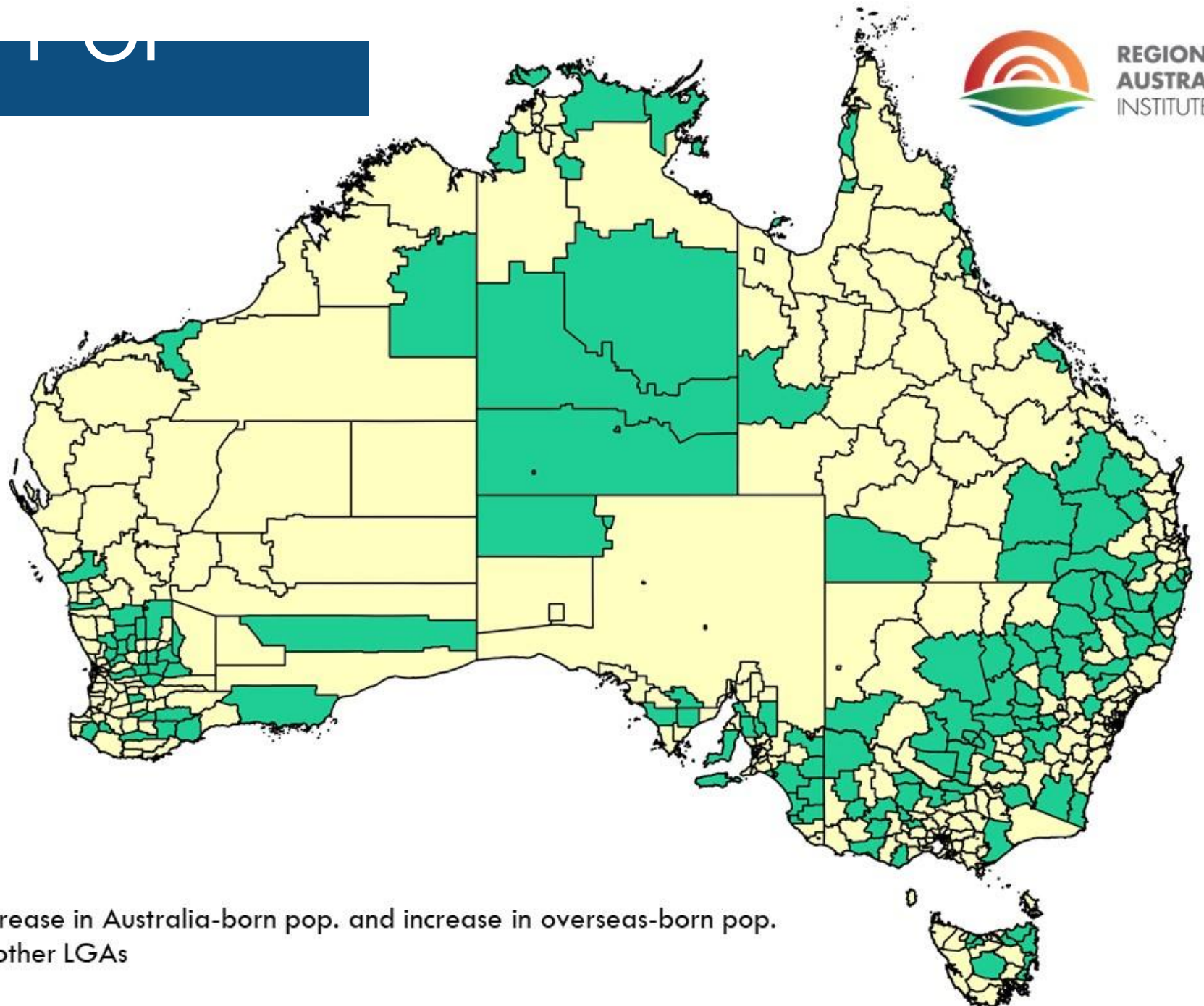
Metropolitan LGA's are those council areas in the main cities of Melbourne, Sydney, Perth, Brisbane and Adelaide

Grew at **10.5%**
to 14,590,917



OPPORTUNITIES FOR MIGRATION

International migration is having the biggest impact in regions struggling for population growth



MIGRANT WORKERS BRING YOUTH TO AG/FORESTRY/FLUORIDES



ALL INDUSTRIES	Aged under 30 years	Aged 50 years or over
Australian-born workers	27%	41%
Overseas-born workers	20%	44%

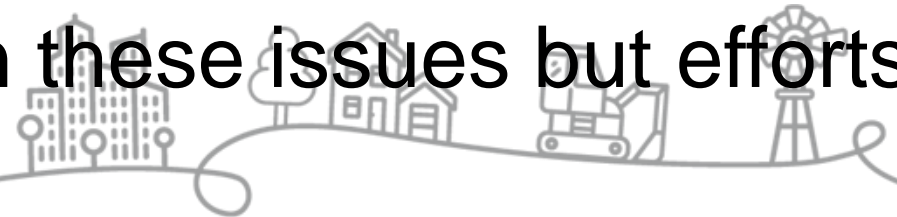
AG/FORESTRY/FLUORIDES INDUSTRY	Aged under 30 years	Aged 50 years or over
Australian-born workers	16%	50%
Overseas-born workers	24%	38%

Source: 2016 Census of population and housing, customised data



KEY MESSAGES

- Regional jobs are changing – pessimistic or opportunistic view
 - Automation will affect regions differently, depending on their job mix
 - Agribusiness and tourism are predicted to grow
 - International migration should be a top priority
- Need to think about how flexible communities/businesses are to change and how well they are positioned to take advantage of opportunities
- Many communities are proactive on these issues but efforts are fragmented





**REGIONAL
AUSTRALIA**
INSTITUTE

LET'S CONNECT



facebook.com/RegionalAustraliaInstitute



twitter.com/regionalaus



linkedin.com/company/regional-australia-institute



Sign up to our Regional Futures eNews:
regionalaustralia.org.au/home/newsletters

